

ELISAS

that perform

DRG

Diabetes

Immunology

Gynecologic Endocrinology

Prenatal Supervision

Tumor Marker

Hematology

Iron Metabolism

Infectious Diseases

Hypertension



DRG

Gynecologic Endocrinology

Estradiol

- Sensitivity: 4.6 pg/ml
- Standard range: 25 - 2000 pg/ml

Progesterone

- Sensitivity: 0.05 ng/ml
- Standard range: 0.3 - 40 ng/ml

17 α -OH Progesterone

- Sensitivity: 0.05 ng/ml
- Standard range: 0,15 - 20 ng/ml



Testosterone

- Sensitivity: 0.069 ng/ml
- Standard range: 0.2 - 16 ng/ml

Free Testosterone

- Sensitivity: 0.15 pg/ml
- Standard range: 1 - 100 pg/ml

Dihydrotestosterone

- Sensitivity: 6.0 pg/ml
- Standard range: 25 - 2500 pg/ml

DHEA-S

- Sensitivity: 0.02 μ g/ml
- Standard range: 0.1 - 10 μ g/ml

DHEA

- Sensitivity: 0.1 ng/ml
- Standard range: 0.2 - 30 ng/ml

Androstendione

- Sensitivity: \leq 0.05 ng/ml
- Standard range: 0.1 - 10 ng/ml

Estrone

- Sensitivity: 6.3 pg/ml
- Standard range: 15 - 2000 pg/ml

SHBG

(Sexual Hormone Binding Globuline)

- Sensitivity: \leq 0.2 nmol/l
- Standard range: 3 - 325 nmol/l

Prolactin

- Sensitivity: 2 ng/ml
- Standard range: 5 - 200 ng/ml

FSH

- Sensitivity: 1 mIU/ml
- Standard range: 5 - 100 mIU/ml

LH

- Sensitivity: 2 mIU/ml
- Standard range: 10 - 200 mIU/ml

β -HCG

- Standard range: 5 - 200 mIU/ml
- Incubation time: 75 min.
- Sensitivity: < 1 mIU/ml

Prenatal Supervision

New



First Trimester Down Syndrome

PAPP-A has been found to be the best marker for down Syndrome screening in the first trimester (10.-13. week of pregnancy). In combination with free β -HCG and the determination of nuchal translucency a detection rate of 89 % with a false positive rate of only 5 % is achieved.

PAPP-A



(Pregnancy Associated Plasma Protein A)

- Standard range: 0 - 60 μ g/ml
- Incubation time: 2 x 30 min. / 15 min

Free β -HCG*

- Standard range: 2.5 - 200 ng/ml
- Short incubation time: 80 min.
- Sensitivity: 0.2 ng/ml

*) Not available in USA, EU

PLGF

PLGF (Placenta Growth Factor) a new marker for

Preeclampsia

Preeclampsia is a common hypertensive disorder of pregnancy characterized by systemic endothelial dysfunction and diagnosed by the appearance of hypertension and proteinuria. Potentially life-threatening complications of preeclampsia include seizures, cerebral hemorrhage, disseminated intravascular coagulation, and renal failure.

- Standard range: 25 - 1000 pg/ml
- Incubation time: 2 h 30 min.
- Sample: 25 μ l Serum
- Sensitivity: < 1.062 pg/ml
- Cut off: 15 - 18 WOP*
< 42 pg/ml

Triple Diagnosis

AFP, HCG and Free Estriol are especially useful in the context of Triple-Diagnosis for providing a risk evaluation for Down-Syndrome, Turner-Syndrome, Trisomie 18 and Triploidie, as well as neural tract and abdominal wall defects.

Free Estriol

- Standard range: 0,3 - 40 ng/ml
- Short incubation time: (90 min. at RT)
- Sensitivity: \leq 0,2 ng/ml

HCG

- Standard range: 5 - 1000 μ /ml
- Short incubation time: (40 min. at RT)
- Sensitivity: \leq 2 μ /ml

HPL

- Standard range: 1,25 - 20 mg/l
- Short incubation time: (40 min. at RT)
- Sensitivity: \leq 0,3 mg/l

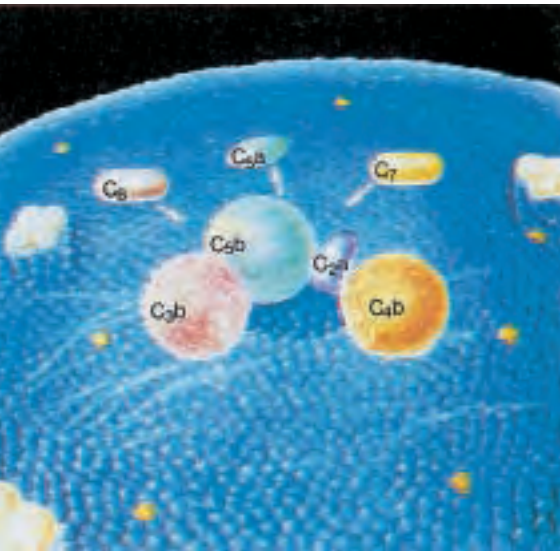
*) WOP = week of pregnancy

AFP

- Standard range: 10 - 160 μ /ml
- Short incubation time: (40 min. at RT)
- Sensitivity: \leq 0,2 μ /ml



Hematology/Complement System



C5a and PAP were formerly manufactured by Dade Behring

C5a (Complement Anaphylatoxin)

Clinical Indications:

- Pathogenesis of septic shock
- Detection of acute Pancreatitis
- Detection of renal allograft rejection after kidney transplantation
- Monitoring of patients after cardio-pulmonary bypass a.o. surgical interventions

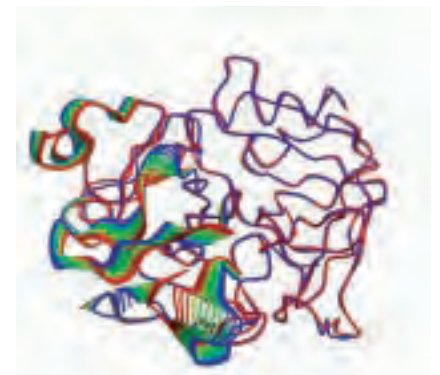
Features:

- Standard range: 0.1 - 10 µg/L
- Sample preparation: Precipitation with Precipitating Reagent and centrifugation to exclude cross-reactivity with uncleaved Complement Factor C5
- Sample: 50 µl plasma or urine
- 4 Standard plasmas and 1 control plasma
- Incubation: 20/15/15 min. at RT
- Sensitivity: < 0.02 µg/L
- Reference range: 0.15 - 0.5 µg/L

PAP (Plasmin α2-antiplasmin complex)

An early marker for fatal outcome in patients after major general surgery

- Standard range: 50 - 5000 ng/ml
- Sensitivity: 10 ng/ml



Immunology

IGF-I-600

Clinical Indications:

Diagnosis of growth disorders in children
Diagnosis and monitoring of acromegaly

Features:

Sample: 50 µl prepared serum sample
Sample Preparation: Acidification and neutralization
Ready-to-use reagents
Incubation: 120/60/30 min. at RT
Standard range: 1 - 600 ng/ml
Sensitivity: 0.15 ng/ml

TGFβI

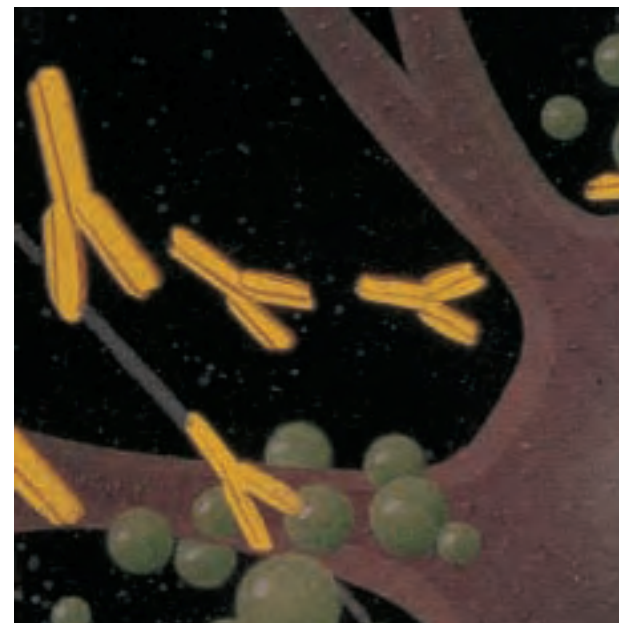
- Standard range: 20 - 600 pg/ml
- Sensitivity: 1.9 pg/ml

TGFβII

- Standard range: 30 - 1000 pg/ml
- Sensitivity: 10 pg/ml

IL-6 (Porcine)

- Standard range: 0 - 4000 pg/ml
- Incubation time: 18 h / 2 h / 20 min.



Iron Metabolism

Hepcidin ELISAS*

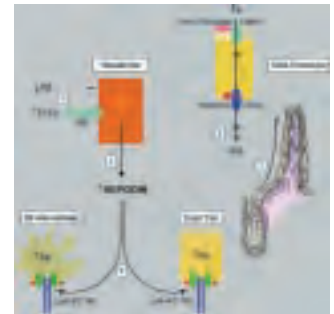
ELISAS for the quantitative measurement of Hepcidin 25 (c-terminal) and Pro-Hepcidin in human serum.

Hepcidin is a small cystein-rich peptide produced in the liver. This molecule regulates the absorption of iron in the body similarly to the correlation of insulin and sugar. Hepcidin was initially isolated as a 25 amino acid (aa) peptide

in human plasma and urine exhibiting antimicrobial activity.

Human Hepcidin is produced from a 84 aa precursor including a putative (24 aa) signal peptide.

Application of the present ELISA allows the detection and determination of Hepcidin 25 and Pro-Hepcidin in serum or plasma.



*) US Patent No. 7,441,048B2
US Patent No. 7,320,894B2
EP Appl. No. 077235125-I222
EP Appl No. 03786845.2

Hepcidin 25 **New**

- Sensitivity: < 0.9 ng/ml
- Incubation: 30/180/45/30 min
- Standard Volume: 20 µL serum
- Standard Range: 0 - 140 ng/ml
- Assay Type: competitive

Pro-Hepcidin

- Sensitivity: 3.95 ng/ml
- Incubation: 120/30/30 min
- Standard Volume: 50 µL serum
- Standard Range: 0 - 1000 ng/ml
- Assay Type: competitive

Diabetes / Obesity

Leptin-ELISAS

Clinical Indications:

Leptin is a newly developed signaling factor encoded by the obese gene in adipose tissue.

Sandwich-ELISA

- Standard range 2 - 100 ng/ml
- Sensitivity: 1.0 ng/ml

Proinsulin

- High sensitivity (0,5 pmol/l)
- No cross reaction with C-Peptide, Insulin, 32 - 33 split and 31 - 32 des Proinsulin
- Standard range (5 - 100 pmol/l)

C-Peptide

- High sensitivity (0.05 ng/ml)
- No cross reactivity with Insulin and Proinsulin
- Standard range 0.2 - 16 ng/ml
- Excellent correlation to established RIA's

Rat Insulin

- Sample: 25µl Serum or Plasma
- Incubation: 60/15 min
- Standard range: 0.15-5.5 µg/L

Also available:

LEPTIN RIAS

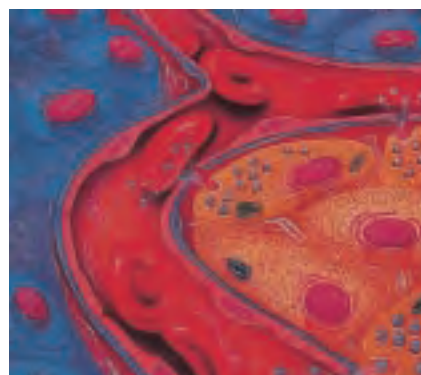
- Human, Rat, Mouse, Primate

Insulin ELISAS

- Porcine, Ovine, Bovine, Equine, Canine
- Rat ultrasensitive
- Lispro, Iso
- Human ultrasensitive

Insulin

- Standard range 6.25 - 100 µIU/ml
- High sensitivity (1.5 µIU/ml)
- Short incubation time 30/30/15 min.



C-Peptide (Rat) RIA + ELISA

Insulin RIA (Rat)

Proinsulin RIA

Neuropeptide Y-RIA

ICA - ELISA

anti GAD - RIA

anti - IA2 - RIA

IAA (Insulin Autoantibodies)

- Sensitivity: n.a.
- Incubation: 18h/60/30 min.

Ghrelin

- Sensitivity: 1 fmol/ml
- Incubation: 120/60/30 min.

Adiponectin

- Sensitivity: 0.78 ng/ml
- Incubation: 120/30/5 min.

CLAS

(Chemiluminescence Immunoassays)

- Super sensitive
- Elongated standard curves
- Short incubation times
- Simple, reliable, safe and efficient
- Direct assays

Cortisol

- Sensitivity: 0.48 ng/ml
- Standard range: 20-800 ng/ml

Testosterone

- Sensitivity: 0.02 ng/ml
- Standard range: 0.2-1.6 ng/ml

17 OH-Progesterone

- Sensitivity: 0.05 ng/ml
- Standard range: 0.15-20 ng/ml

Progesterone

- Sensitivity: 0.04 ng/ml
- Standard range: 0.3-40 ng/ml

Also available:

- **Estradiol CLA**
- **DHEA-S CLA**
- **CA 72-4 CLA**
- **CYFRA 21-1 CLA**
- **Prolactin CLA**

Coming soon:

- **FSH CLA**
- **LH CLA**



DRG

ELISAS
that perform

DRG Subsidiaries

China

DRG International, Inc., Beijing Office

German Center for Industry and Trade
Unit 912, Landmark Tower I
8 North Dongsanhuan Road
Chaoyang District
Beijing 100004 P. R. China
Tel: 86 (10) 6590 0239
Fax: 86 (10) 6590 0231
E-Mail: drgchina@drg-international.com
www.drg-international.com.cn

Czech Republic

DRG spol. s r.o.

Sumavska 33
61254 Brno, Czech Republic
Tel/Fax: 420 (5) 41 23 53 26
E-Mail: objednavky@drgbrno.cz

Poland

DRG MedTek South Poland

ul. Piotra Skargi 28
44-100 Gliwice, Poland
E-Mail: drg_wj@medianet.pl
www.drg.alpha.pl

Poland

DRG MedTek Sp. zo.o.

ul. Wita Stwosza 24
02-661 Warszawa, Poland
Phone: 48 (22) 8 47 82 44;
8 47 83 75
Fax: 48 (22) 8 43 72 74
E-Mail: office@drgmedtek.pl
www.drgmedtek.pl

Russia - Moscow

DRG TechSystems

T. Shevchenko Embankment, 3
121248. Moscow, Russia
Tel: 7 (495) 2 43-52 28 /-56 21/-40 28
Fax: 7 (495) 2 43-93-00
E-Mail: drgtech@dol.ru
www.drgtech.ru

Russia - St. Petersburg

DRG Biomed O.O.O.

ul. Serdobolskaja - I# 183
St. Petersburg 19 41 56, Russia
Tel: 7 (812) 4 92 56 93
Fax: 7 (812) 4 96 00 47
E-Mail: DRGSPb@users.mns.ru



DRG Instruments GmbH, Germany

Frauenbergstraße 18
D-35039 Marburg
Tel. +49 (0) 64 21/170 00,
Fax +49 (0) 64 21/170050
Internet: www.drg-diagnostics.de
E-mail: drg@drg-diagnostics.de

Local Distributor



DRG International Inc. USA

1167 U.S. Highway 22 East
Mountainside, N.J. 07092 USA
Phone: +1 (908) 233-2079
Fax +1 (908) 233-0758
Internet: www.drg-international.com
E-mail: corp@drg-international.com



DRG Diagnostics

DRG Instruments GmbH, founded in 1973 by Dr. Geacintov, a subsidiary of DRG Intl. Inc., USA, is a diagnostics manufacturer and distributor with successful operations in over 100 countries. The DRG Group focuses on high technology medical diagnostic areas such as Diabetes Diagnosis, Gynecology, Oncology, Immunology, Infectious Diseases and Toxicology. The highly skilled DRG Staff of medical, clinical, marketing and service specialists are experts at taking innovative technology to market through local territory knowledge and contacts, end-user training, education and cost effective financial and logistical support. The DRG-Development and Immunoassay production facilities are located in Marburg, Germany, in addition to OEM manufacturing in the USA.

A range of new, occasionally unique ELISA kits has been developed. The DRG ELISA kits compete effectively in both price and performance in all major world diagnostics markets.

To complete the diagnostic reagent line, DRG supplies the clinical laboratory with all necessary equipment, including a semi-automatic microtiterplate processor, the DRG E-LizaMat 3000, and fully automated open systems for 2 or 4 microtiterplate determinations, which are fully compatible with all Elisas.

DRG has the FIRST fully automated random access Analyzer for Immunoassays, Clinical Chemistry and Immunoturbidimetry, the

DRG:HYBRID•XL

under development. The first instruments will be available at the end of 2010.

The DRG Group operates through a network of DRG subsidiaries in Germany, Poland, Russia, China and the Czech Republic, and through distributors in Europe, the Middle East, Africa and the Pacific Region. This infrastructure offers access to specialized medical markets in most major countries around the world.



ELISAS that perform

DRG

DRG develops and manufactures diagnostic ELISA test kits for use in clinical and research laboratories. The experience of our production and management team guarantees to provide high quality products, competitive prices and excellent customer service.

DRG-NOVUM ELISAS

At the end of 2003 DRG acquired the assets of Novum Diagnostica, Dietzenbach. Novum developed and manufactured a wide range of products to identify and manage infectious diseases.

Now DRG manufactures these ELISAS with the same excellent quality and offers these assays at competitive prices.

Quality

DRG works to EN ISO 9001:2000 and ISO 13485:2003 +AC:2007 standard, certified by TÜV Rheinland Product Safety GmbH, an indication of our commitment to customer service, quality control and improved health care.

We participate in a number of quality assessment schemes, which include Instand (Germany) and Dt. Ges. für Klinische Chemie, DGKL (Germany).

DRG products meet the essential requirements of the directive 98/79/EC of 27. October 1998 on in-vitro diagnostic medical devices.



Production Facility,
Marburg

NEW ELISAS

Iron Metabolism

- Hcpidin (c-terminal)

Alzheimer Disease

- anti-Amyloid-Beta Ab

Hypertension

- Renin (active)

Tumormarker

- LI-CAM (LI Cell Adhesion Molecule)
- Afamin
- Crypto I
- NOV (CCN-3)
- CYR 61 (CCN-1)

Infectious Diseases

- Fasciola IgG
- Rickettsia conorii

NEW CLIAS

(Chemiluminescence Immunoassays)

Tumormarker

- CYFRA 21-I
- CA 72-4



Salivary Steroid ELISA Kits

Cortisol

- Sensitivity: 0.537 ng/ml
- Standard range: 2 - 80 ng/ml

Progesterone

- Sensitivity: 3.8 pg/ml
- Standard range: 10 - 5000 pg/ml

Estradiol

- Sensitivity: 0.4 pg/ml
- Standard range: 0.1 - 100 pg/ml

DHEA

- High Sensitivity: 2.186 pg/ml
- Standard range: 10 - 1440 pg/ml

17 α -OH Progesterone

- Sensitivity: 2.5 pg/ml
- Standard range: 10 - 1000 pg/ml

Testosterone

- Sensitivity: 7.1 pg/ml
- Standard range: 10 - 5000 pg/ml

Estrone*

- High Sensitivity
- Short incubation time

* Coming soon

Androstendione

- Sensitivity: 5 pg/ml
- Standard range: 20 - 1000 pg/ml

Free Estriol

- Sensitivity: 3 pg/ml
- Standard range: 5 - 4000 pg/ml

Cortisol HS (high sensitive)

- Sensitivity: 0.012 ng/ml
- Standard range: 0.1-30 ng/ml

also available:

- Melatonin
- DHEA-S
- Cotinin
- IgA

Cardiac Diseases Hypertension

PAPP-A (ultrasensitive) *

Pregnancy-Associated Plasma Protein A, a new candidate marker for the early diagnosis of Acute Coronary Syndroms (ACS).

- Incubation time: 2 h 45 min.
- Standard range: 0 - 450 ng/ml
- Sample: 100 μ l Serum

*) Not available in USA



New

Renin (active)

- Active Renin, without Extraction
- Incubation time: 60/120/30/20 min
- Standard range: 2.5 - 128 pg/ml
- Sensitivity: \approx 1.0 pg/ml

Aldosterone

- Sensitivity: 8 pg/ml
- Standard range: 20 - 2000 pg/ml

Liver Fibrosis

CTGF*

(Connective Tissue Growth Factor)
Potential new marker for liver fibrosis in early stages (F1, F2)

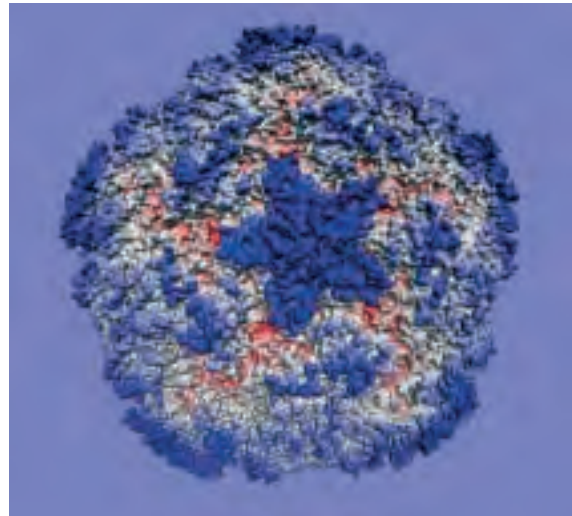
- Specificity 78% (liver fibrosis F1)
- Sensitivity 83,7% (liver fibrosis F1)

*) coming soon

Infectious Diseases

Virology

Adenovirus Antigen (stool)
 Adenovirus IgA
 Adenovirus IgG
 Adenovirus IgM
 Astrovirus
 Avian Influenza
 Chikungunya IgG/IgM
 Coxsackievirus B5
 Cytomegalovirus (CMV) IgG (quantitative)
 Cytomegalovirus (CMV) IgM (quantitative)
 Dengue IgG
 Dengue IgM
 Echovirus
 Enterovirus IgG/IgM
 Epstein Barr Virus (EBV-VCA) IgG
 Epstein Barr Virus (EBV-VCA) IgM
 Epstein Barr Virus (EBNA-1) IgG
 Epstein Barr Virus (EBNA-1) IgM
 Herpes-simplex-Virus Type 1+2
 (HSV-1+2) IgG
 Herpes-simplex-Virus Type 1+2
 (HSV-1+2) IgM
 HPV IgM
 Influenza A IgA/IgM/IgG
 Influenza B IgA/IgM/IgG
 JE (Japanese Encephalitis)
 Measles-Virus IgG
 Measles-Virus IgM
 Mumps-Virus IgG
 Mumps-Virus IgM
 Parainfluenza 1/2/3 IgA/IgG/IgM
 Parvovirus B 19 IgG/IgM
 Rotavirus Antigen (stool)
 Respiratory Syncytial Virus (RSV) IgA/IgM/IgG
 Rubella IgG/IgM (quantitative)
 Tick-borne-encephalitis TBE IgG/IgM
 Varicella-Zoster Virus (VZV) IgG
 Varicella-Zoster Virus (VZV) IgM
 Varicella-Zoster Virus (VZV) IgA
 West Nile / Flavivirus IgG/IgM

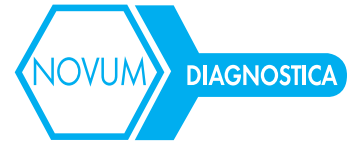


Parasites

Ascaris lumbricoides IgG
 Cryptosporidium Antigen (stool)
 Echinococcus granulosus IgG
 Entamoeba histolytica Antigen (stool)
 Entamoeba histolytica IgG
 Fasciola hepatica IgG
 Giardia lamblia Antigen (stool)
 Leishmania IgG
 Malaria (Plasmodium falciparum)
 Schistosoma mansoni IgG
 Strongyloides IgG
 Taenia solium IgG
 Toxocara canis IgG
 Toxoplasma (Toxo) IgG
 Toxoplasma (Toxo) IgM
 Trichinella spiralis IgG
 Trypanosoma cruzi IgG (Chagas)



Infectious Diseases



NEW ELISAS

Enterovirus IgG/IgM
Fasciola IgG
HPV IgG
Meningitis IgG

Rickettsia conorii IgM
Treponema pallidum Screen
Tubex TP (Typhoid Fever)
Chikungunya IgG/IgM

Bacteriology

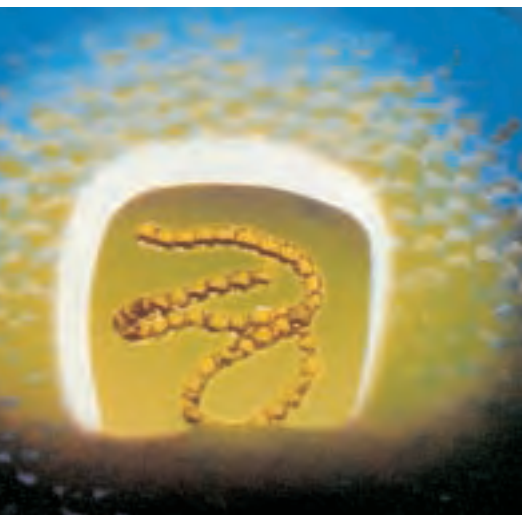
Bordetella pertussis / toxin IgA
Bordetella pertussis / toxin IgG
Bordetella pertussis / toxin IgM
Borrelia burgdorferi IgG
Borrelia burgdorferi IgM
Brucella IgG
Brucella IgM
Chlamydia Ag PCR
Chlamydia trachomatis Ag
Chlamydia trachomatis IgA
Chlamydia trachomatis IgG
Chlamydia trachomatis IgM
Chlamydia pneumoniae IgA
Chlamydia pneumoniae IgG
Chlamydia pneumoniae IgM

Corynebacterium diphtheriae IgG
E.Coli 0157 Ag (stool)
E.Coli Verotoxin Ag (stool)
Gardnerella IgA/IgG/IgM
Helicobacter pylori IgA
Helicobacter pylori IgG
Helicobacter pylori AG (stool)
Legionella pneumophila AG (Urine)
Leptospira biflexa IgG
Mycoplasma hominis IgG/IgM
Mycoplasma pneumoniae IgA
Mycoplasma pneumoniae IgG
Mycoplasma pneumoniae IgM
Mycobacterium tuberculosis IgA
Tuberculosis IgA/IgG/IgM
Tetanus toxin IgG
Treponema pallidum IgG/IgM
Ureaplasma urealyticum IgG/IgM
Yersinia enterocolitica



Fungi

Aspergillus fumigatus IgA/IgG/IgM
Candida albicans IgA
Candida albicans IgG
Candida albicans IgM



Hepatitis*

HCV Antibody
HBsAg
anti HBs
HBeAb
HAV Antibody
HBcAb

* please ask for the complete panel

Thyroid Function

T3

- Standard range: 0.75 - 10,0 ng/ml
- Incubation: 60/20 min.
- Sensitivity: 0.17 ng/ml

Free T3

- Standard range: 2 - 25 pg/ml
- Incubation: 60/20 min.

TG Ab

- Standard range: 100 - 4000 U/ml
- Incubation: 30/30/30 min.

T4

- Standard range: 2 - 25 µg/dl
- Incubation: 60/20 min.
- Sensitivity: < 0.3 µg/dl

Free T4

- Standard range: 0.4 - 12.0 ng/dl
- Incubation: 60/20 min.
- Sensitivity: 0.011 µg/dl

TPO Ab

- Standard range: 50 - 600 IU/ml
- Incubation: 30/30/30 min.

TSH ultrasensitive

- Standard range: 0,1 - 10 µIU/ml
- Incubation: 120/20 min.
- Sensitivity: 0.05 µIU/ml

Thyroglobulin TG Ag

- Standard range: 3 - 300 ng/ml
- Incubation: 60/60/15 min.

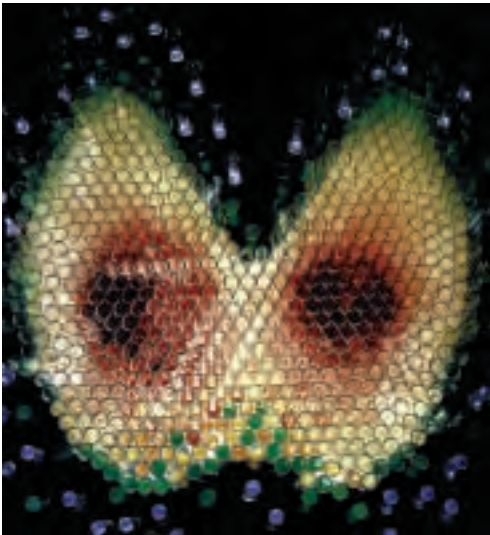
TSH Receptor Autoantibodies

Clinical Indications:

Diagnosis and management of Hyperthyroidism in Graves' Disease, caused by autoantibodies to the TSH Receptor.

Features:

- 4 calibrators: 1-40 U/L*, Positive/negative control
- *Units are Thyroid Stimulating Antibody
- 1st Intl. Standard 90/672
- Sample: 100 µl Serum
- Incubation: 120/20/20/20 min. at RT
- TSH Receptor Ab levels are expressed as an inhibition of TSH binding index or read off standard curve



Pituitary/Adrenal Function

Cortisol (Serum, Urine)

- Sensitivity: 2.5 ng/ml
- Standard range: 20 - 800 ng/ml

Corisol (Saliva)

- Sensitivity: 0.537 ng/ml
- Standard range: 2 - 80 ng/ml

Corticosterone

- Sensitivity: 1.6 nmol/l
- Standard range: 5 - 240 nmol/l

Tumor Marker

CEA

- Incubation time: 90 min. at RT
- Standard range: 5 - 100 ng/ml
- Sensitivity: ≤ 0.596 ng/ml

CA 15-3

- Standard range: 25 - 200 U/ml
- Incubation time: 45 min. at RT
- Sensitivity: 0.9 U/ml

TPS

- Standard range: 30 - 1200 u/ml
- Incubation time: 3 h/30 min. or 2 h/15 min. on a shaker

TPA

- Standard range: 1 - 15 ng/ml
- Incubation time: 3 h/30/15 min.
- Sensitivity: 0.1 ng/ml

β -HCG

- Standard range: 5 - 200 mIU/ml
- Incubation time: 75 min.
- Sensitivity: <1 mIU/ml

Afamin

New

Novel protein marker for ovarian and testicular cancer.
Improved predictivity when combined in patients with CA 125 > U/ml.
Sensitivity > 70% for TC (testicular cancer)
Significantly reduced Afamin plasma concentrations in pre-operative TC patients.
Predictive for all species of TC, replaces at least 2 conventional markers.

- Standard range: 0 - 100 μ g/ml
- Incubation time: 60/30/15 min

Crypto I

New

- Incubation time: 180/30/20 min.
- Standard range: 50 - 800 pg/ml
- Anal. Sensitivity: 15 pg/ml

AFP

- Standard range: 10 - 160 mIU/ml
- Short Incubation time: (40 min. at RT)
- Sensitivity: $\leq 0,3$ mg/l

CA 125

- Short incubation time: 60 min. at RT
- Standard range: 15 - 500 U/ml
- Sensitivity: 3.3 U/ml

CA 72-4

- Sensitivity: <0.31 U/ml
- Standard range: 3 - 100 u/ml
- Incubation time: 120/30 min

SCC

- Standard range: 1 - 50 ng/ml
- Incubation time: 60/30 min.

SI00B

- Standard range: 50 - 2000 pg/ml
- Sensitivity: 5 pg/ml

CA 19-9

- Incubation time: 60 min at RT
- Standard range: 15 - 240 U/ml
- Sensitivity: 0.89 U/ml

PSA equimolar

- Standard range: 1 - 60 μ g/l
- Sensitivity: $\leq 0,1$ μ g/l
- Exc. correlation

Free PSA

- Sensitivity: $\leq 0,05$ μ g/l
- Standard range: 1 - 30 μ g/l
- Highly specific

NOV

New

(CCN-3, Nephroblastoma Overexpressed)

- Incubation time: 60/60/30/15 min.
- Standard range: 0.5 - 32 ng/ml
- Anal. Sensitivity: 0.1 ng/ml

UBC

For diagnosis of Urinary Bladder Cancer

- Sensitivity: 0.1 μ g/L
- Standard range: 1-15 μ g/L
- Incubation time: 120/15 min.



NSE

- Results within: 2 h, one step procedure
- Measuring range: 1-130 μ g/L

CYFRA 21-1

- Short Incubation time: 1 h
- Standard range: 3 - 50 ng/ml
- Sensitivity: 0.3 ng/ml

Chromogranin A

For diagnosis and monitoring of patients with carcinoid tumours, islet cell tumours, pheochromocytoma, neuroblastoma, and other tumours of neuroendocrine origin. It may also be used for small-cell lung cancer and prostate cancer, in men with normal PSA levels.

- Standard range: 50 - 1500 μ g/ml
- Incubation time: 90 min.

CYR 61

New

(CCN-1, Cystein-rich-protein)

- Incubation time: 120/30/15 min.
- Standard range: 40 - 1000 pg/ml
- Anal. Sensitivity: 14.9 pg/ml

L1-CAM

New

(L1 cell adhesion molecule)
Pathogenetic factor in Endometriosis
LICAM is over expressed in ovarian and endometrial carcinomas and is associated with a bad prognosis LICAM expression is higher in atypical endometriosis. Women with atypical endometriosis have a higher probability for developing ovarian cancer.

- Standard range: 0 - 140 ng/ml
- Incubation time: 60/60/30/15 min